

CONSOLE CONNECTOR KIT 8216 INSTALLATION INSTRUCTIONS

FOR USE WITH: HAMMOND H-100 Series
LESLIE Speakers 122, 142

KIT CONTENT

Console Connector Assembly	015644	Tremolo Control	
Hardware Package	011353	brown	015594
Wire Nut (2)	028076	ebony	015602
Staple, insulated (6)	028464	ivory	015610
Screw, sheet metal, 8 x 1/2, Phillips head (2)	029132	Cable Assembly, 6-conductor 30-foot	017277
Screw, wood, 6 x 1/2, Phillips head (2)	029124	Oiler	053025

INSTALLATION

CAUTION: DISCONNECT ORGAN POWER BEFORE PROCEEDING!

1. Mount the tremolo control switch on the wooden rail in front of the lower manual, using the wood screws provided.

CAUTION: Due to the presence of electrical potential and the danger of moving mechanical parts, installation procedures or adjustments requiring work inside the LESLIE speaker cabinet or the organ console should be performed only by a service man authorized by the dealer or factory to perform such work.

2. Route the control cable under the lower manual, through the knee panel, and into the amplifier section of the console. If no opening is provided, drill a 7/8-in. hole in the knee panel just under the lower manual.
3. Mount the console connector chassis inside the console within reach of the adapter and control cables, using the wood screws provided.
4. Connect the cable from the tremolo control to the two bare leads on the console connector, using the wire nuts provided. (A, figure 1)
5. Insert the plug of the console connector cable into the TONE CAB socket (B, figure 1) on the organ console amplifier. If there is a cable already there, disconnect it. (See step 7.)
6. Move the CONSOLE -- TONE CAB. switch (C) on the amplifier to TONE CAB.
7. If a plug was disconnected from the TONE CAB socket, in step 5, connect this plug to the socket marked MAIN, on the console connector. (D, figure 1)

8. Plug the LESLIE speaker cable into the socket marked LESLIE SPKR. (E) on the connector chassis.
9. Set the LESLIE tone cabinet volume control at "4".
10. Depress the swell control to maximum and fully extend all drawbars. Sound one chord and one pedal note together. At the same time, adjust the VOL. CONTROL (F) on the console connector until some distortion is heard; then back the control off until the distortion is eliminated.
11. Adjust the LESLIE tone cabinet volume as described in the Owner's Manual, and set the console connector TONE CONTROL (G) to the desired brilliance. The installation is now complete.

Reference

Designation	Description	Part No.
C1	Capacitor, disc, ceramic, .0047 mfd, 100V	028431
C2	Capacitor, poly, .022 mfd, 200V	054304
C3	Capacitor, 10 mfd, 250V	018093
C4	Capacitor, 50 mfd, 15V	028324
C5, C6	Capacitor, 50 mfd, 50V	025262
C7	Capacitor, .33 mfd, 75V	028647
Q1	Transistor, TZ1518	014944
Q2	Transistor, RCA 40362	018069
Q3	Transistor, RCA 40321	022939
R1	Resistor, 15K, 1/2W, 10%	048157
R2	Resistor, wire-wound, 22.5K, 5W	028688
R3	Resistor, 18K, 1/2W, 10%	018028
R4	Resistor, 15-ohm, 1/2W, 10%	018051
R5	Resistor, 470K, 1/2W, 10%	018002
R6, R7	Resistor, 56K, 1/2W, 10%	024133
R8	Resistor, 1200-ohm, 1/2W, 10%	018036
R9	Resistor, 1K, 1/2W, 5%	018044
R10	Resistor, 150K, 1W, 10%	024117
R11	Resistor, 82K, 1/2W, 10%	027102
R15	Resistor, 56K, 1/2W, 10%	024133
R16	Resistor, 390K, 1/2W, 10%	018010
Etched Circuit Board		014308

Ordering Parts

Standard hardware, connectors, and electronic components should be purchased locally. Non-standard items may be obtained through a LESLIE speaker dealer. Orders should include part numbers as listed.

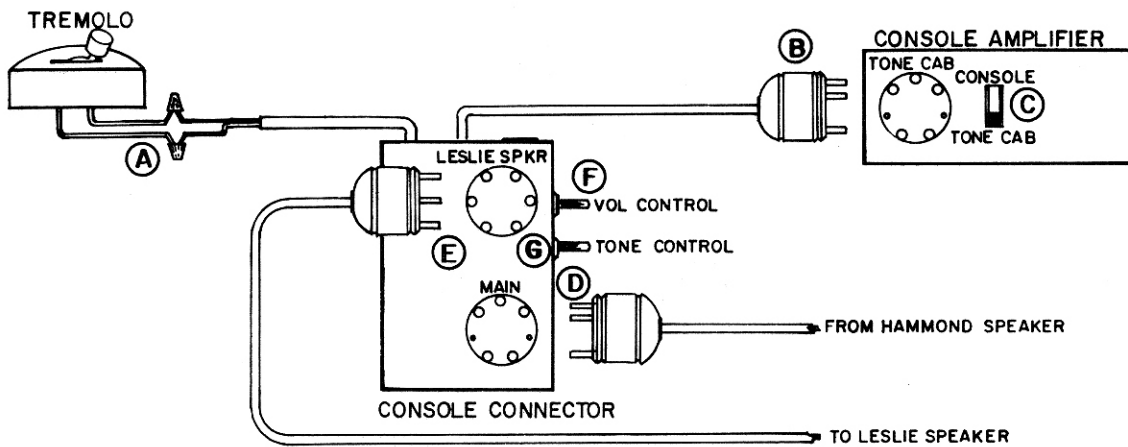


Figure 1 Installation Diagram

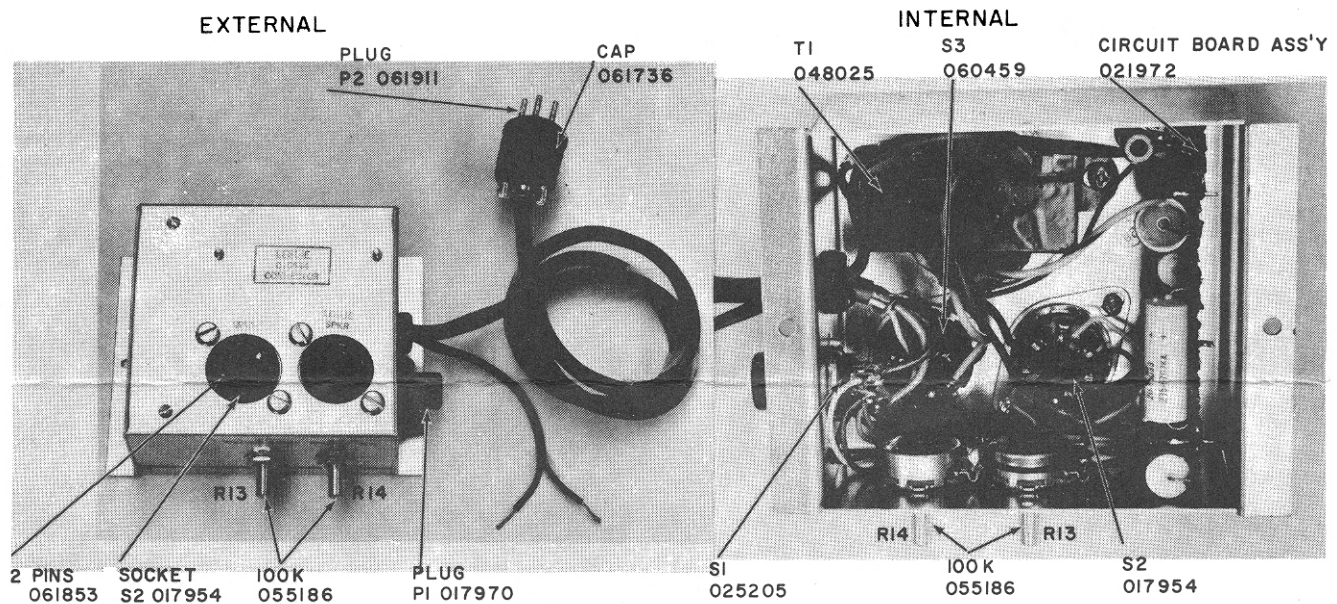


Figure 2. Parts Location, Console Connector 015644

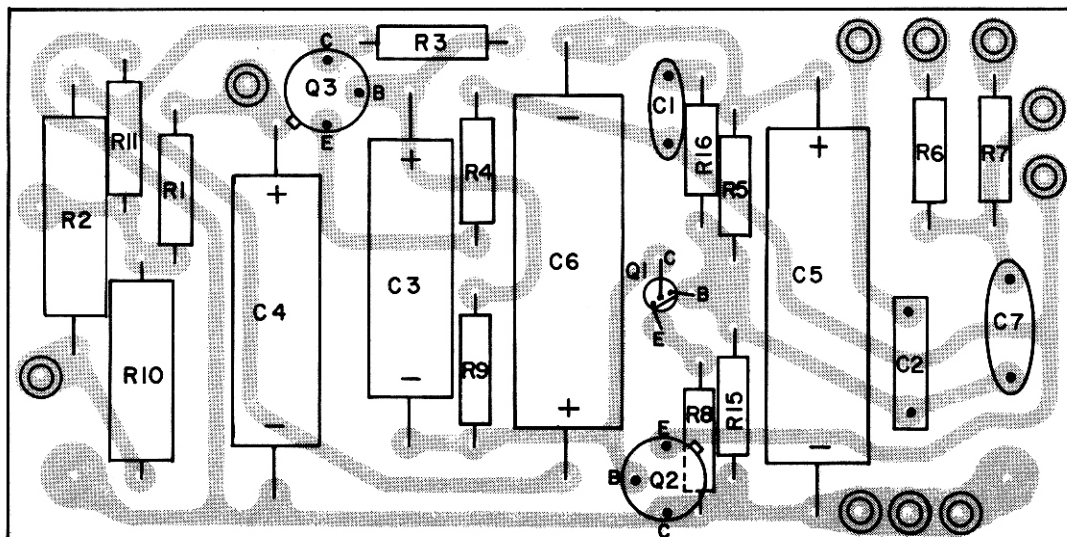


Figure 3. Parts Layout, Circuit Board Assembly 021972

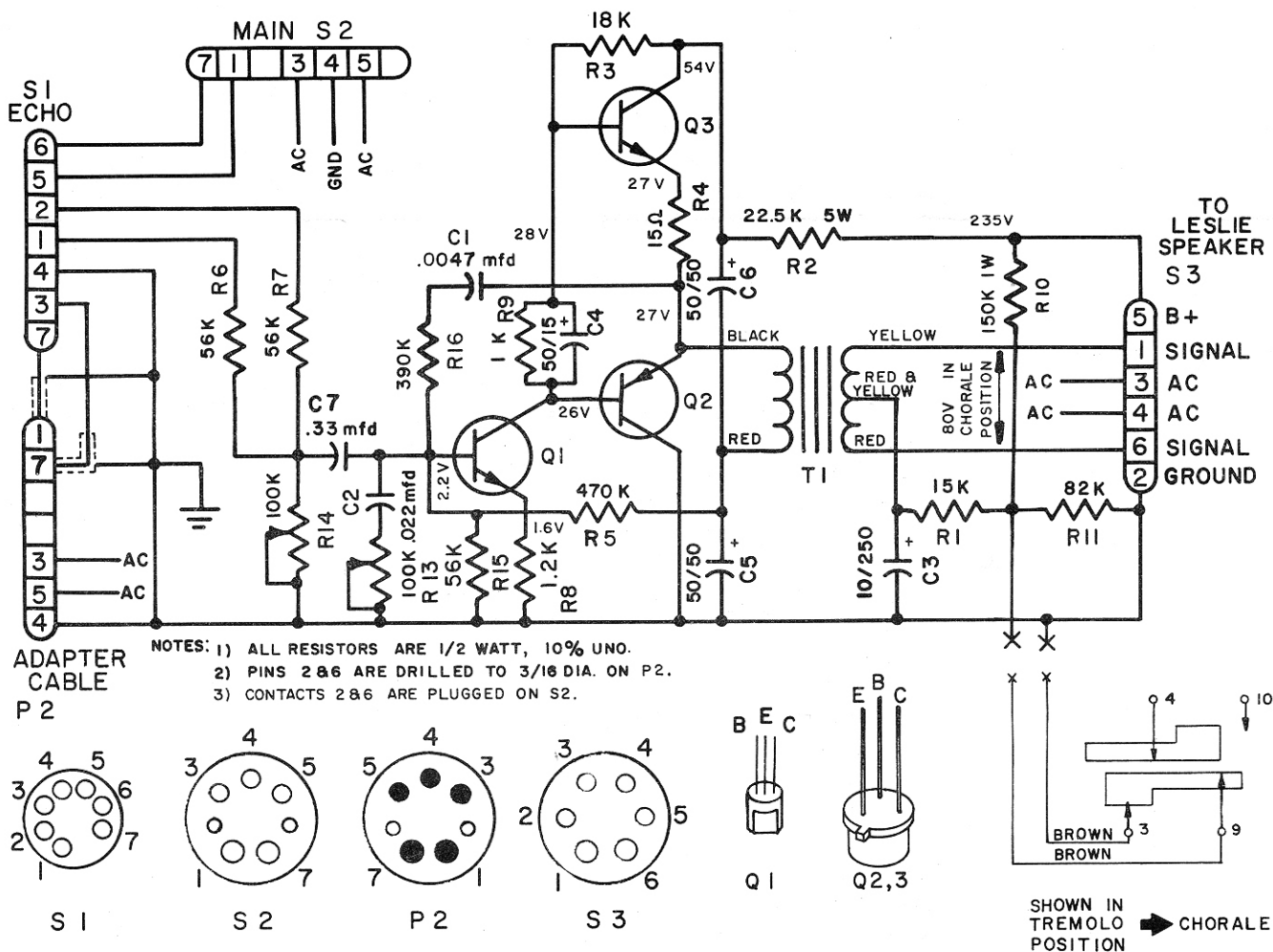


Figure 4. Schematic, Console Connector 015644 With Controls

PARTS LIST: TREMOLO CONTROL

Switch Case

brown	103750
ebony	103760
ivory	103770

Case Cover

brown	048702
ebony	048710
ivory	048728

Switch Knob

brown	048066
ebony	048074

Switch, Cable, & Plug Assembly

061994

Switch Retainer (2)

048744

Screw, thread-cutting, 6 x 3/8 (2)

029140

Label, CHORALE/TREMOLO

103640

Cork, adhesive

029517