



INSTALLATION INSTRUCTIONS FOR CONNECTING THE
LESLIE 215 CONTROL CENTER (141835)
AND
8-OHM CROSSOVER NETWORK (141726)

FOR USE WITH: Single channel organs with (or without)
a built-in rotor and some two channel
organs with separate Flute/Tibia speaker.

: LESLIE SPEAKER MODEL 215

LESLIE 215 CONTROL CENTER 141835, ONLY

KIT CONTENT

Switch Assembly, Organ/Echo,	
Past (fixed) Slow	141847
Clamp, cable	058255
Screw, SMA, 8 x 5/8 (1)	025627
Washer, FW, 8 x 1/2 (1)	015578

INSTALLATION

CAUTION: DISCONNECT ORGAN POWER BEFORE PROCEEDING!

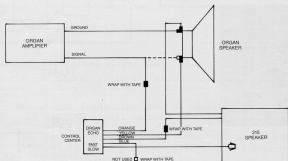


Fig. 1

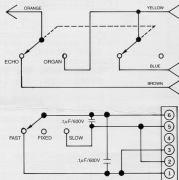
1. Detach the bottom from the Model 215 cabinet. Remove and discard the Amp jumper plug.
2. Run the cable with the Amp plug from the Control Center through the access hole in the speaker bottom and plug into the socket.
3. Fasten the cable to the inside of the speaker with cable clamp provided and replace the bottom on the speaker.

4. Disconnect signal (colored) wire from organ speaker and connect to the ORANGE wire from the Control Center. (Caution: To avoid shorting, wrap with insulating tape.)
5. Connect the YELLOW wire from the Control Center to the organ speaker signal terminal.
6. Connect the BROWN wire from the Control Center to the (male) connector tab from the Model 215 speaker wire. (Caution: To avoid shorting, wrap with insulating tape.)

7. Connect the (female) connector tab from the Model 215 speaker wire to the ground (black wire) terminal on the organ speaker.

Note: The BLUE wire from the Control Center is not used and should be wrapped with insulating tape to avoid shorting.

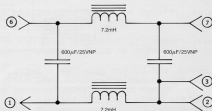
8. Loop the Model 215 speaker wire and Control Center cable through the cable clamp (Fig. 2) and fasten where it will exit from inside the organ console.



Schematic, Leslie 215 Control Center
141847



Fig. 2 Cable Clamp



Schematic, 8-ohm Crossover Network
141721

8-OHM CROSSOVER NETWORK 141726, ONLY

KIT CONTENT

Crossover Network Assembly	141721
Two (2) 18-inch Wire Leads,	
Red, signal	141830
Black, ground	141828
Screw, SMA, 8 x 1 (2)	020735

INSTALLATION

CAUTION: DISCONNECT ORGAN POWER BEFORE PROCEEDING!

Mount the Crossover Network inside the organ within reach of the organ speaker. Use the sheet metal screws provided. (Note: If the organ speaker terminals are solder-type, remove the connector tab from one end of each of the Wire Leads, supplied, and solder to the proper terminals.)

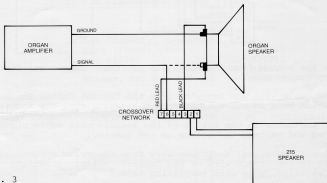


Fig. 3

1. Disconnect the signal (colored) wire from the organ speaker and connect to Terminal #6 on the Crossover Network.
2. Connect the signal (red) Wire Lead to Terminal #7 on the Crossover Network and the signal terminal on the organ speaker.
3. Connect the (female) connector tab from the Model 215 speaker wire to Terminal #2 and the (male) connector tab to Terminal #1 on the Crossover Network.
4. Connect the ground (black) Wire Lead to Terminal #3 on the Crossover Network and the ground terminal on the organ speaker.
5. Make sure the Model 215 speaker wire is routed through the organ back properly. Loop the speaker wire through the cable clamp (Fig. 2) and fasten where it will exit from inside the organ console.

INSTALLATION INSTRUCTIONS FOR CONNECTING BOTH
THE CONTROL CENTER AND CROSSOVER NETWORK

CAUTION: DISCONNECT ORGAN POWER BEFORE PROCEEDING!

(Mount the Crossover Network as stated on Page 3)

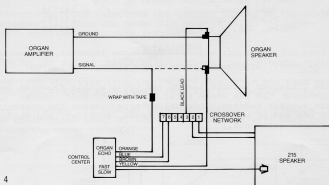


Fig. 4

1. Detach the bottom from the Model 215 cabinet. Remove and discard the Amp jumper plug.
2. Run the cable with the Amp plug from the Control Center through the access hole in the speaker bottom and plug into the socket.
3. Fasten the cable to the inside of the speaker with cable clamp provided and replace the bottom on the speaker.
4. Disconnect the signal (colored) wire from the organ speaker and connect to the ORANGE wire of the Control Center. (Caution: To avoid shorting, wrap with insulating tape.)
5. Connect the YELLOW wire from the Control Center to the organ speaker signal terminal.
6. Connect the BLUE wire from the Control Center to Terminal #7 on the Crossover Network.
7. Connect the BROWN wire from the Control Center to Terminal #6 on the Crossover Network.
8. Connect the (male) connector tab from the Model 215 speaker wire to Terminal #1 and the (female) connector tab to Terminal #2 on the Crossover Network.
9. Connect the ground (black) Wire Lead to Terminal #3 on the Crossover Network and the ground terminal on the organ speaker.
10. Make sure the Model 215 speaker wire and Control Center cable are routed through the organ back properly. Loop the speaker wire and cable through the cable clamp (Fig. 2) and fasten where it will exit from inside the organ console.