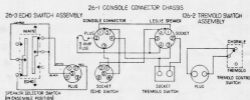


126 CONSOLE CONNECTOR KIT

WITH MODELS 120, 120C, 145, 147, 247 and 247RV LESLIE ORGAN SPEAKERS

STANDARD PROCEDURE -- For All Organs

1. Remove back covers, take out shipping blocks from amplifier and from both tremolo motors. Replace backs and attach the 30-foot connecting cable to the amplifier.
2. Attach tremolo and echo controls to the wooden rail directly in front of the lower manual by choosing the two mounting holes on each control case which best center the wood screws in the rail. Locate controls together at either end, or with one at each end.
3. Pass control cables through openings to inside of console; openings may be found in bottom side of lower manual, on left-hand side behind lower manual, or in corner of knee panel. If only a "cable size" hole is provided, cut cables near the plug ends, strip 1/2 inch, pass through opening, then reconnect using wire nuts. If no opening is provided, drill a 7/8 inch hole in the shelf below the cheek block under the lower manual.
4. Locate the No. 26-1 Console Connector Chassis inside organ at a convenient point, making sure that connector adapter and control cables will reach. Fasten the chassis in place using the wood screws which are provided.
5. Connect Leslie Console Adapters to 26-1 Chassis. Adapter installation instructions are provided with adapter.



ELECTRO MUSIC

USE OF THE NO. 126 CONSOLE CONNECTOR KIT

WITH MODELS 145 AND 147 LESLIE ORGAN SPEAKERS

Installation Instructions for Gulbransen, Hammond, Lowrey, and Warlitzer Organs

STANDARD PROCEDURES -- For All Organs

1. Remove back covers, take out shipping blocks from amplifier and from both tremolo motors. Replace backs and attach the 30-foot connecting cable to the amplifier.
2. Attach tremolo and echo controls to the wooden rail directly in front of the lower manual by choosing the two mounting holes on each control case which best center the wood screws in the rail. Locate controls together at either end, or with one at each end.
3. Pass control cables through openings to inside of console; openings may be found in bottom side of lower manual, on left-hand side behind lower manual, or in corner of knee panel. If only a "cable-size" hole is provided, cut cables near the plug ends, strip 1/2 inch, pass through opening, then reconnect using wire nuts. If no opening is provided, drill a 7/8 inch hole in the shelf below the check block under the lower manual.
4. Locate the No. 26-1 Console Connector Chassis inside organ at a convenient point, making sure that connector and control cables will reach. Fasten the chassis in place using the wood screws which are provided.

ADAPTATION PROCEDURES -- For Individual Organs

Gulbransen Organs, Models G-3A, H-1, M-4, T-110, T-200, and V; also, Models E-1 and E-2 when equipped with translator amplifiers

1. Plug the 5-contact socket of the No. 27-6 Console Adapter into the No. 26-1 Chassis.
2. Disconnect the 12-pole plug from the amplifier and connect it to the 12-contact socket of the adapter.
3. Connect the adapter's 12-pole plug to the previously vacated socket on the amplifier.
4. Connect the adapter's AC power cord to the AC outlet on the console amplifier. NOTE: In T-100 installations, AC power is obtained by means of the female socket (furnished with the No. 27-6 adapter) which is to be attached to the console light power supply cord.

Gulbransen Organs, other models

NOTE: This excludes Models D-1, D-2, J, K, N-1, N-2, and S, which utilize other Leslie Speaker models, but NOT the 145 or 147.

1. Plug the 5-contact socket of the No. 27-5 Console Adapter into the No. 26-1 Chassis.
2. Disconnect the 6-pole console speaker plug from the amplifier and connect it to the 6-contact adapter socket.
3. Connect the adapter's 6-pole plug to the previously vacated console speaker socket on the amplifier.
4. Connect the adapter's AC power cord to the power outlet on the console amplifier.

Hammond Organs, Models M-1 and M-2

1. Plug the 5-contact socket of the No. 27-1 Console Adapter into the No. 26-1 Chassis.
2. Disconnect the 5-pole plug (red terminals) and discard the adapter's 5-pole plug and socket assembly, as it is not used with these particular Hammond models.
3. Disconnect the green speaker wire from the console amplifier output terminals, then connect it to the green adapter wire and insulate the connection with the plastic sleeve.
4. Connect the red adapter wire to the output terminal vacated by the green speaker wire.
5. Add the black adapter wire to the amplifier's other output terminals, to which the black speaker wire is also connected.
6. Connect the grey and blue adapter wires to the two AC terminals on the console amplifier which are under the control of the console power switch.

Hammond Organs, Model M-3

1. Plug the 5-contact socket of the No. 27-1 Console Adapter into the No. 26-1 Chassis.
2. Disconnect the 5-pole console speaker socket from the amplifier, and connect it to the 5-contact adapter socket.
3. Connect the adapter's 5-pole plug to the previously vacated console speaker socket on the amplifier.
4. Solder the blue and grey adapter wires to the two AC lugs on the console amplifier which are under the control of the console power switch.

Hammond Organs, Models L-100 and M-100

1. Plug the 5-contact socket of the No. 27-1 Console Adapter into the No. 26-1 Chassis.
 2. Cut off the 5-pole plug and socket assembly, cutting the red, green, and black wires at a point just above the screw terminal connections.
 3. Discard this plug and socket assembly, but save one of the plastic insulating sleeves for future use.
 4. Strip the ends of the red, green, and black wires so that the special connectors (in envelope) may be attached, i.e., clamped and soldered, as follows: red wire - male connector; green wire - female connector; black wire - female connector.
 5. Disconnect the green wire (from the amplifier) at the speaker terminal, and fit the plastic insulating sleeve over it. Connect this green wire to the red adapter wire by means of the special connector. Pull the plastic sleeve over the connection.
- NOTE: In the case of late M-100 organs, in which there is a direct connection (red wire) between the reverberation amplifier and one of the two main speakers, a different procedure should be followed: the red wire from the reverberation amplifier, and the green wire from the main amplifier should both be cut at a point near the speaker terminals. Approximately 1/2 inch of insulation should be removed from the end of each of these wires, and they should then be connected to the red adapter wire, using the wire nut which is furnished.
6. Connect the green adapter wire to the speaker terminal just vacated by the green wire.
 7. A second speaker operates in parallel with the speaker mentioned in step 3. The black adapter wire is to be connected to this "second speaker" at the same terminal to which the black wire from the other speaker is already connected.
 8. Connect the blue and grey adapter wires to the two AC terminals on the console amplifier which are under the control of the console power switch.

Hammond Organs, Model K-100

1. Plug the 5-contact socket of the No. 27-2 Console Adapter into the No. 26-1 Chassis.
2. Remove the 2-pin plug from the output socket on the console amplifier, and in its place insert the adapter's 2-pin plug.
3. Connect the 2-pin plug previously removed to the adapter's 2-contact socket.
4. Connect the adapter's 5-pin plug to the external speaker socket on the console amplifier.

Lowrey Organs

Certain Lowrey models are regularly equipped for the Leslie Speaker, and no adapter or connector need be used in making the installation. Controls for the Leslie are already built into the consoles, and a socket is provided for the Leslie cable connections. Models in this category are the Lowrey Heritage (DSL), Heritage DeLuxe (DSO), Brentwood (MSL), Brentwood DeLuxe (MSO), Lincolnwood (SS-25), Lincolnwood DeLuxe (SSO-25), Festival (FL), Festival DeLuxe (FLO), Coronation (CN), Church (CH), and Church DeLuxe (CHO).

Other Lowrey Models cannot utilize either the Model 145 or the Model 147 Leslies. These are the Lowrey Theatre Models H-1 and H-25. Other Leslie models must be used for these particular instruments.

Lowrey Holiday, Chapel, Brentwood, Heritage, Lincoln, Theatre Model H, and Starlet (if transistorized)

1. Plug the 5-contact socket of the No. 27-8 Console Adapter into the No. 26-1 Chassis.
2. Disconnect the 8-pole console speaker plug from the organ amplifier and plug it into the 8-contact adapter socket.
3. Connect the adapter's 8-pole plug to the previously vacated console speaker socket on the amplifier.

Lowrey Starlet

For the early tube-type instruments in this model group, use the No. 27-9 Console Adapter. This adapter has five open leads, each labelled according to function. Refer to the organ wiring diagram for correct identification of signal and AC power sources. The Starlet model organ is of late design, using transistors; it will be equipped with the 8-contact output socket, thus can use the standard No. 27-8 Console Adapter.

Wurlitzer Models 4100, 4102, and 4460

1. Plug the 5-contact socket of the No. 27-5 Console Adapter into the No. 26-1 Chassis.
2. Remove the dummy 6-pole plug from the console amplifier and in its place insert the 6-pole adapter plug.
3. Connect the dummy 6-pole plug, removed in the previous step, to the 6-contact adapter socket.
4. Connect the adapter's AC power cord to the power outlet on the console amplifier.

Wurlitzer Models 44, 4000, 4040, 4200, 4250, 4410, 4420, 4430, and 4602

1. Plug the 5-contact socket of the No. 27-5 Console Adapter into the No. 26-1 Chassis. NOTE: In the case of the 4430, the No. 26-1 chassis must be mounted on the upper back rail inside of the console - otherwise the control cables will not reach.
2. Disconnect the 6-pole console speaker plug from the amplifier and connect it to the 6-contact adapter socket.
3. Connect the adapter's 6-pole plug to the previously vacated console speaker socket on the amplifier.
4. Connect the adapter's AC power cord to the power outlet on the console amplifier. (Do not use blower motor outlet.)

Wurlitzer Models 4600 and 4800

Special adapters must be used with these models to permit the connection to be made at the console amplifier. These special adapters (to be used with the No. 27-5 Adapter) are not regularly included in the Console Connector Kit, but must be obtained separately, as follows:

For 4600, order Leslie Parts Nos. 628-2 and 628-3

For 4800, order Leslie Part No. 628-4

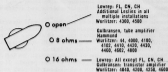
Once the correct adapters have been attached, the remaining steps of the installation are as described previously for the Models 44, 4000, etc.

Other Organs

It should not be assumed that the Models 145 and 147 Leslie Speakers can be used with every make or model organ. However, the 145 and 147 are usable with certain organs other than those mentioned above. In many cases, the No. 27-9 Adapter should be used; this is a "utility" adapter with open leads, clearly labelled, for obtaining AC and signal from the console. In still other cases, certain special adapters should be used. These are listed in the parts list.

FINAL INSTALLATION STEPS - For All Organs

1. Complete the connection of speaker to organ by plugging the 6-conductor cable into the No. 26-1 Console Connector Chassis.
2. Set the Console Load Resistor Switch according to the make and model of the organ, as shown below:



3. Set the Volume Control on the Leslie Type 147 Amplifier as follows: with all stops "on" and with maximum setting of the expression pedal, play a full chord and a single pedal note. Advance volume control setting up to a point where distortion can be heard, then back off just far enough to eliminate distortion.

MULTIPLE SPEAKER INSTALLATIONS

Any number of Leslie Speakers may be connected to a console, but AC power must be provided for the additional speakers from a source other than the console. This is done quite simply by use of the 5B Power Relay, which not only facilitates use of an AC power source, but also provides full on-off control of the independent speaker from the console power switch. Speakers in a multiple installation are connected in series by means of the standard 6-conductor cable (Part No. 727). The 5B relay is attached to the amplifier of the Leslie Speaker "ahead" of the Leslie which this relay controls. The relay is connected to the input plug of the first Leslie, and the cable from the console is connected to the relay. The remaining socket on the relay accommodates the cable which leads to the speaker being added. The AC cord from the relay is to be connected to a convenient electrical outlet.

Volume control settings are very important in multiple speaker installations. To achieve proper balance between the several cabinets that may be used, set the volume of each speaker individually, following the procedure given above.