



CONSOLE CONNECTOR KIT 9503

INSTALLATION INSTRUCTIONS

FOR USE WITH: HAMMOND Organ Models C-2, C-3
LESLIE Speaker Model 760, 770, 825

KIT CONTENT

Console Connector Assembly	042440	Echo Control		
Console Connector Extension	042648		brown	032243
Hardware Package	044552		ebony	032250
Screw, wood, 6 x 1/2,			ivory	032268
Phillips head (4)	029124	Tremolo Control		
Screw, sheet metal,			brown	042606
8 x 1/2, Phillips head (2)	029132		ebony	042614
Screw, sheet metal,			ivory	042622
8 x 1/2, Phillips head (2)	042408	Cable Assembly, 9-conductor,		
Wire Nut (7)	028076	30-foot		021600
Staple, insulated (7)	028464	Oilr		053025

CAUTION: Due to the presence of electrical potential and the danger of moving mechanical parts, installation procedures or adjustments requiring work inside the LESLIE speaker cabinet or the organ console should be performed only by a service man authorized by the dealer or factory to perform such work.

INSTALLATION

CAUTION: DISCONNECT ORGAN POWER BEFORE PROCEEDING!

1. Mount the echo and tremolo switches on the wooden rail in front of the lower manual, in a position convenient for the organist. Wood screws are provided.
2. Route the control cables under the lower manual, through the keyboard shelf, and into the amplifier section of the console.
3. Mount the console connector chassis inside the console within reach of the adapter and control cables, using sheet metal screws.
4. Tape the red, white, and black twisted wires from the connector console and fasten them out of the way; they are not used in this installation.
5. Connect the three wires from the tremolo control to the correspondingly colored jacketed wires from the console connector, using wire nuts. (B, figure 1)

6. Connect the four wires from the echo control to the correspondingly colored jacketed wires from the console connector, using wire nuts. (C)
7. Locate the "down tube" in the organ. Remove the screw from the locking clamp which holds the down tube (on top of the junction box). Slide the tube up approximately three inches. (D)
8. Guide the wires that are in the down tube through the opening in the extension chassis. (E, figure 2)
9. Drop a string through the down tube and tie the string around the plug of the extension cable. (F)
10. Pull the cable up the tube and into the tone generator section of the organ. Remove the string. Insert the plug into the appropriate socket on the console connector. (G, figure 1)
11. Connect the blue and the gray extension cable wires to the 117V AC terminals behind the protective cover on the organ pre-amplifier. (H)
12. Fit the down tube into the opening in the extension chassis. Mount the chassis, using the bronze colored wood screws from the kit. (figure 2)

NOTE: The terminals on the pre-amplifier (steps 13 and 15) may be solder-type terminals. If this is the case, cut the spade lugs from the console connector wires and solder the wires to the terminals.

13. Connect the black wire from the console connector to the GND terminal on the organ pre-amplifier. (I, figure 1)
14. Remove the red and the black wires from the two G terminals on the pre-amplifier and connect them to the two screw terminals on the console connector. (J)
15. Connect the two red wires from the console connector to the G terminals. (K)
16. Connect the speaker cable between the socket on the extension chassis and the LESLIE speaker.
17. If necessary, adjust the volume of the LESLIE speaker.

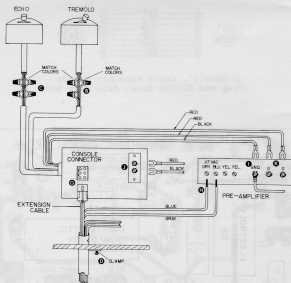


Figure 1. Interconnections

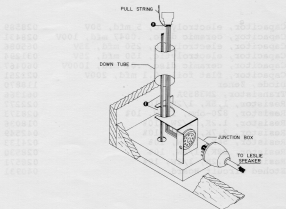
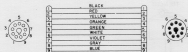


Figure 2. Cable and Down Tube Extension Installation



Schematic, Cable Assembly 021600
(Plug and Socket Shown from Wire End)

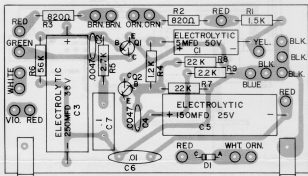


Figure 3. Circuit Board Assembly 042457

C1	Capacitor, electrolytic, 5 mfd, 50V	028589
C2,C4	Capacitor, ceramic disc, .0047 mfd, 100V	028431
C3	Capacitor, electrolytic, 250 mfd, 35V	065086
C5	Capacitor, electrolytic, 150 mfd, 25V	031294
C6	Capacitor, ceramic disc, .01 mfd, 1000V	060467
C7	Capacitor, flat foil, 0.1 mfd, 200V	022251
D1	Diode, Zener	118870
Q1,Q2	Transistor, 2N3859A	061366
R1	Resistor, 1.5K, 1/2W, 10%	022277
R2,R3	Resistor, 820-ohm, 1/2W, 10%	028373
R4	Resistor, 1.2K, 1/2W, 10%	018036
R5	Resistor, 2.7K, 1/2W, 10%	042549
R6	Resistor, 56K, 1/2W, 10%	024133
R7,R8	Resistor, 22K, 1/2W, 10%	028530
R9	Resistor, 2.2K, 1/2W, 10%	028571
	Etched Circuit Board	040931

Ordering Parts

Standard hardware, connectors, and electronic components should be purchased locally. Non-standard items may be obtained through a LESLIE speaker dealer. Orders should include part numbers as listed.

PARTS LIST: 042440 CONSOLE CONNECTOR ASSEMBLY

Circuit Board Assembly	042457
Housing, socket, 6-circuit	042119
Insert, connector, female	023556
Contact, lug, spade, #8	010439
Bushing, strain relief	034769

PARTS LIST: 021600 CABLE ASSEMBLY

Plug Assembly, 9-pin	061879
Socket, 9-contact	028837
Cap, body	022046
Clamp, cut	022079
Screw, machine, 6-32 x 3/8 (4)	027979

PARTS LIST: TREMOLO CONTROL

Switch Case		Switch & Cable Assembly	042598
	brown 103750		
	ebony 103760	Switch Retainer (2)	048116
	ivory 103770		
Case Cover		Screw, thread-cutting,	
	brown 048702	6-32 x 3/8 (2)	029140
	ebony 048710		
	ivory 048728	Label, CHORALE/OFF/TREMOLO	103650
Switch Knob		Cork, adhesive	029157
	brown 048066		
	ebony 048074		

PARTS LIST: ECHO CONTROL

Switch Case		Switch & Cable Assembly	035584
	brown 103750		
	ebony 103760	Switch Retainer (2)	048116
	ivory 103770		
Case Cover		Screw, thread-cutting,	
	brown 048702	6-32 x 3/8 (2)	029140
	ebony 048710		
	ivory 048728	Label, MAIN/ENSEMBLE/ECHO	103670
Switch Knob		Cork, adhesive	029157
	brown 048066		
	ebony 048074		

MULTIPLE SPEAKER INSTALLATION

For complete information see the service manual for the LESLIE speaker to be added.

