



## CONSOLE CONNECTOR KIT 9500

### INSTALLATION INSTRUCTIONS

FOR USE WITH: HAMMOND Organ Models B2, B3  
LESLIE Speaker Model 760, 770, 825

#### KIT CONTENT

Console Connector Assembly	042440	<i>Trem</i> <del>Echo</del> Control		
Console Connector Extension	042432			
Cable Assembly, 9-conductor, 30-ft	021600		brown	042606
Oiler	053025		ebony	042614
Hardware Package	044552	<i>Echo</i> <del>Tremolo</del> Control	ivory	042622
			brown	032243
			ebony	032250
			ivory	032268

**CAUTION:** Due to the presence of electrical potential and the danger of moving mechanical parts, installation procedures or adjustments requiring work inside the LESLIE speaker cabinet or the organ console should be performed only by a service man authorized by the dealer or factory to perform such work.

#### INSTALLATION

**CAUTION:** DISCONNECT ORGAN POWER BEFORE PROCEEDING!

1. Mount the echo and tremolo control switches on the wooden rail in front of the lower manual, using the wood screws provided.
2. Route the control cables under the lower manual, through the keyboard shelf, and into the amplifier section of the console.
3. Mount the console connector chassis inside the console within reach of the adapter and control cables, using the sheet metal screws provided.
4. Connect the three wires from the tremolo control and the three jacketed wires from the connector chassis, using the wire nuts provided. **MATCH COLORS.** (See "B" on Fig. 1).
5. Connect the four wires from the echo control and the four jacketed wires from the connector chassis, using the wire nuts provided. **MATCH COLORS.** (See "C" on Fig. 1).

## Ordering Parts

Standard hardware, connectors, and electronic components should be purchased locally. Non-standard items may be obtained through a LESLIE speaker dealer. Orders should include part numbers as listed.

### PARTS LIST: 042440 CONSOLE CONNECTOR ASSEMBLY

Circuit Board Assembly	042457
Housing, socket, 6-circuit	042119
Insert, connector, female	023556
Contact, lug, spade, #8	010439
Bushing, strain relief	034769

### PARTS LIST: 021600 CABLE ASSEMBLY

Plug Assembly, 9-pin	016879
Socket, 9-contact	028837
Cap Body, right	130000
Cap Body, left	130010
Screw, sheet metal, 4 x 1/2, hex washer head	136360

### PARTS LIST: TREMOLO CONTROL

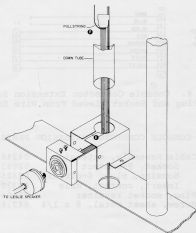
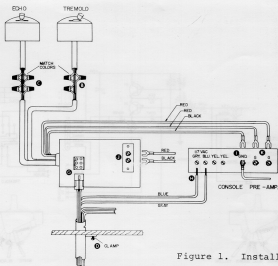
Switch Case		Switch & Cable Assembly	042598
brown	103750		
ebony	103760		
ivory	103770	Switch Retainer (2)	048116
Case Cover		Screw, thread-cutting, 6-32 x 3/8 (2)	029140
brown	048702		
ebony	048710	Label, CHORALE/OFF/TREMOLO	103650
ivory	048728		
Switch Knob		Cork, adhesive, 11/16 x 3	029157
brown	048066		
ebony	048074		

### PARTS LIST: ECHO CONTROL

Switch Case		Switch & Cable Assembly	035584
brown	103750		
ebony	103760		
ivory	103770	Switch Retainer (2)	048116
Case Cover		Screw, thread-cutting, 6-32 x 3/8 (2)	029140
brown	048702		
ebony	048710	Label, MAIN/ENS/ECHO	103670
ivory	048728		
Switch Knob		Cork, adhesive, 11/16 x 3	029157
brown	048066		
ebony	048074		

### MULTIPLE SPEAKER INSTALLATION

For complete information see the service manual for the LESLIE speaker to be added.





6. Tape the RED, WHITE, and BLACK twisted wires from the connector chassis together with electrical tape. They will not be used in this installation.
  7. Remove the screw from the locking clamp securing the "DOWN TUBE" nearest the console junction box. Slide the tube up approximately three inches. (See "D" on Fig. 1).
  8. Remove the two side screws and loosen the two top screws of the extension chassis and remove the end plate from the chassis body. (See Fig. 2).
  9. Guide the existing console wires through the slot in the extension chassis. (See "E" on Fig. 2).
  10. Drop a pull string through the down tube and tie it around the extension cable plug. (See "F" on Fig. 2).
  11. Pull the extension cable up the tube and into the tone generator section of the console. Insert the plug into the socket on the connector chassis. (See "G" on Fig. 1).
  12. Connect the BLUE and GRAY extension cable wires to the 117VAC terminals behind the protective cover on the console Pre-amp. (See "H" on Fig. 1).
  13. Fit the down tube into the extension chassis and reassemble the chassis. Mount the chassis, using the bronzed sheet metal screws provided in the kit. (See Fig. 2)
  14. Connect the BLACK connector wire to the GND terminal on the console Pre-amp. (See "I" on Fig. 1).
  15. Remove the RED and BLACK wires from the two G terminals on the console Pre-amp and connect them to the two screw terminals on the connector chassis. (See "J" on Fig. 1).
  16. Connect the two RED connector wires to the two G terminals on the console Pre-amp. (See "K" on Fig. 1).
- NOTE: Terminals in steps 12 and 14-16 may be solder-type terminals. If this is the case remove the spade lugs from the connector wires and solder the wires to the terminals.
17. Plug the LESLIE speaker cable into the socket on the extension chassis.
  18. Adjust the volume as outlined on the speaker back card or in the LESLIE service manual. The installation is now complete.

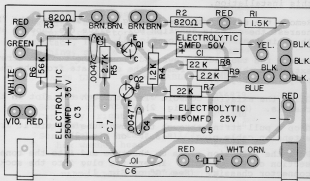


Figure 5. Circuit Board Assembly Part No. 042457

C1	Capacitor, electrolytic, 5 mfd, 50V	028589
C2,C4	Capacitor, ceramic disc, .0047 mfd, 100V	028431
C3	Capacitor, electrolytic, 250 mfd, 35V	065086
C5	Capacitor, electrolytic, 150 mfd, 25V	031294
C6	Capacitor, ceramic disc, .01 mfd, 1000V	060467
C7	Capacitor, flat foil, 0.1 mfd, 200V	022251
D1	Diode, Zener	118870
Q1,Q2	Transistor, 2N3859A	061166
R1	Resistor, 1.5K, 1/2W, 10%	022277
R2,R3	Resistor, 820-ohm, 1/2W, 10%	028373
R4	Resistor, 1.2K, 1/2W, 10%	018036
R5	Resistor, 2.7K, 1/2W, 10%	042549
R6	Resistor, 56K, 1/2W, 10%	024133
R7,R8	Resistor, 22K, 1/2W, 10%	028530
R9	Resistor, 2.2K, 1/2W, 10%	028571
	Etched Circuit Board	040931