



CONSOLE CONNECTOR KIT 8805

INSTALLATION INSTRUCTIONS

FOR USE WITH: All single channel organs with built-in speaker systems.

: LESLIE SPEAKERS - 315, 415, HL422, 715,
815, HL722, HLB22
(Cable Assembly 137357 included with speaker)

KIT CONTENT

Console Connector Assembly	141576
Switch Assembly, Fixed/Rotary/Organ	141579
Hardware Package	137356
Oilier Package	053025

CAUTION: Due to the presence of electrical potential and the danger of moving mechanical parts, installation procedures or adjustments requiring work inside the LESLIE speaker cabinet or the organ console should be performed only by service personnel authorized by the dealer or factory to perform such work.

INSTALLATION

CAUTION: DISCONNECT ORGAN POWER BEFORE PROCEEDING!

CONSOLE CONNECTOR MOUNTING

It is intended that the plug-in connection to the Leslie Speaker be made within the amplifier section of the organ so it is directly accessible from the outside. Mount the console connector chassis inside the organ within reach of the organ speaker(s) or crossover network (use the sheet metal screws provided), and accessible through a hole or opening in the back panel of the organ. Some organs may have such an opening; if not, a small angular cut at one of the lower corners of the back panel will usually provide sufficient space for the cable to pass through.

NOTE: If the organ circuit terminals are solder-type, remove the spade lugs from the console connector wires and solder to the proper terminals.

ONE-CHANNEL ORGANS WITH BUILT-IN SPEAKER (Fig. 1A)

1. Connect the BLACK wire of the console connector to the organ speaker ground terminal or to any ground point on the organ console amplifier.
2. Remove the signal wire from the speaker in the organ; attach it to the RED wire of the console connector.
3. Attach the WHITE wire to the speaker signal terminal. (If the wires in the organ are cut (Fig.1B), connect the side coming from the amplifier to the RED wire of the console connector. Connect the wire which is still attached to the speaker to the WHITE wire.)

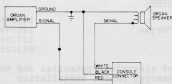


Fig. 1A

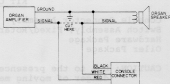


Fig. 1B

LESLIE CONTROL CENTER MOUNTING

Select a location along the keyboard where the Leslie Control Center is to be mounted, left or right, as the organist prefers. The plug on the control cable must pass into the interior of the organ and connect to the console connector chassis. If no hole is available, use a hole saw to make a 1-inch diameter hole.

4. Place the template (Fig.2) on the underside of the shelf and mark the screw holes with a center punch or nail.
5. Put four leveling screws (flat-headed machine screws) into the holes indicated, WITH THE HEADS UP, in the mounting bracket. Adjust each screw so the control is level (Fig.3).
6. Attach the mounting bracket in position with screws provided which are long enough to fasten the control to the organ but not so long as to damage internal wiring or components.
7. Route the control cable through the hole prepared for it and attach to the console connector socket. Fasten the cable to the underside of the organ shelf with the clamps provided and gather the excess neatly inside the organ.

8. Replace the back panel to the organ, making sure that the cable from the console connector is not pinched, and fasten the panel securely. Attach the other end of the 11-conductor cable to the Leslie Speaker.

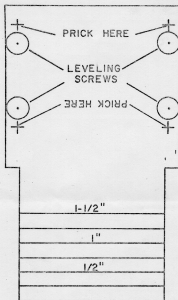


Figure 2. Control Location and Mounting Pattern

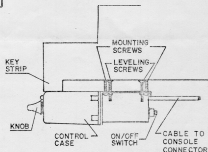


Figure 3. Control Mounted on Organ

CONTROLS

The Leslie Control Center, mounted just below the organ keyboard, groups all the controls in one convenient location.

Located on the back of the control (Fig.3) is the ON/OFF switch (push/push type) that actuates the Leslie Speaker. In the ON position (red light glowing), the speakers in the cabinet are ready to respond.

The three toggle switches on the front, control the rotor speed, cabinet channel selection and organ/cabinet selection.

The left toggle switch, FAST/OFF/SLOW, sets the fast or slow speed of the LESLIE rotors - or OFF (not turning).

The center toggle switch is a FIXED/MIX/ROTARY switch. In the FIXED position, the sound is only heard from the stationary speakers. In the ROTARY position, the sound is only heard from the rotary speakers. In the MIX position, the sound is heard from both the rotary and stationary speakers.

The right toggle switch, ORGAN/MIX/ECHO, locates where the sound is coming from. In the ORGAN position, the sound is coming from the organ speakers. In the ECHO position, the sound is coming from the cabinet speakers. In the MIX position, the sound comes from both the organ and cabinet speakers.

ONE-CHANNEL ORGANS WITH CROSSOVER NETWORK

AND SEVERAL BUILT-IN SPEAKERS (Fig. 4)

1. Connect the BLACK wire of the console connector to the organ crossover ground terminal or to any ground point on the organ console amplifier.
2. Remove signal input lead to crossover network (cut if necessary) and connect to the RED wire of the console connector.
3. Connect the WHITE wire of the console connector to the input to the crossover network (lead just cut).

To complete the installation of the LESLIE CONTROL CENTER follow Steps 4, 5, 6, 7 and 8 on Pages 2 and 3.

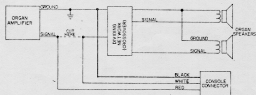


Fig. 4. Single-Channel Organs with crossover network and several speakers.

ORDERING PARTS

Standard hardware, connectors and electronic components should be purchased locally. Non-standard items may be obtained through a Leslie Speaker dealer. Orders should include part numbers as listed.

PARTS LIST: 141576 CONSOLE CONNECTOR ASSEMBLY

Socket, 11-contact (S1)	028852
Housing, socket, 12-circuit	
mini Molex with tabs (S3)	137286
Contact, insert, mini Molex, female (11)	065581
Terminal Strip, 7-lug	117990
Resistor, WW, 16-ohm, 10W, 10%	029363
Resistor, WW, 8-ohm, 5W, 10%	021493

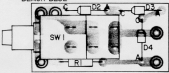
PARTS LIST: 141579 SWITCH ASSEMBLY, PAST/ROTARY/ECHO

Switch and Cable Assembly	141580
Cable with Diode Assembly	141590
Diode, light emitting	104680
Bushing, snap with ring	141585
Knob, switch, white (3)	137291
Nut, knurled (4)	132430
Cork, adhesive	137419
Case (Listed for reference only)	141584

PARTS LIST: 141580 SWITCH AND CABLE ASSEMBLY

Circuit Board Assembly	141582
Switch, lever, 3-position,	
FAST/ROTARY/ECHO (3) (SW2, SW3, SW4)	137304
Housing, plug, mini Molex, 12-circuit,	
natural (white) (P3)	101310
Contact, insert, miniature Molex, male (11)	065599

PARTS LIST: 141582 CIRCUIT BOARD ASSEMBLY

	Switch, push/push (SW1)	137303
	Diode, silicon, 1-amp,	
	100PIV (3)	021154
	Resistor, cf, 47-ohm,	
	.5W, 5%	016311

PARTS LIST: 137356 HARDWARE PACKAGE

Clamp, cable (4)	011676
Screw, SMA, 8 x 1 (4)	020735
Screw, SMA, 8 x 1/2 (10)	029132
Screw, SMA, 8 x 3/4 (4)	106070
Screw, SMA, 8 x 1-1/4 (4)	137417
Screw, M, 10-32 x 1-1/4 (4)	137418
Washer, Flat, 8 x 1/2 (10)	015578
Nut, Wire (5)	028076

PARTS LIST: 137357 CABLE ASSEMBLY

(Listed for reference only - part of cabinet assembly)

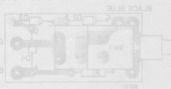
Plug Assembly, 11-pin (with screw)	137299
Socket, 11-contact	137297
Package, plug cap and screws (order for repair use; contains cap, body sections, screws & tubing)	137457

PARTS LIST: 141580 SWITCH AND CABLE ASSEMBLY

141580	Circuit Board Assembly
141581	Switch, lever, 3-position
141582	FAST/ROTARY/CHO (2) (SW2, SW4)
141583	Housing, plug, mini Molex, 11-circuit
141584	nut, knurled (4)
141585	Cork, adhesive
141586	Case (Listed for reference only)

PARTS LIST: 141581 CIRCUIT BOARD ASSEMBLY

141581	Switch, push/push (SW1)
141582	Diode, silicon, 1-amp
141583	100P1V (2)
141584	Resistor, 62, 47-ohm
141585	2W, 25



SWITCH ASSEMBLY 41579

CONSOLE CONNECTOR 141576

CABLE ASSEMBLY 137357

TO LESLIE SPEAKER

CONTROL SUPPLY COMMON
CONTROL CIRCUIT COMMON

FAST MOTOR CONTROL

SLOW MOTOR CONTROL

CIRCUIT GROUND
CHANNEL ONE (ROTARY)

CHANNEL TWO (FIXED)

P3 S3

S2 P2

S1

GREEN 5

GREEN 5

GREEN 5

BLUE 6

BLUE 6

BLUE 6

VIOLET 7

VIOLET 7

VIOLET 7

GRAY 8

GRAY 8

GRAY 8

YELLOW 4

YELLOW 4

YELLOW 4

BROWN 1

BROWN 1

BROWN 1

WHITE/BLACK 10

WHITE/BLACK 10

WHITE/BLACK 10

RED 2

RED 2

RED 2

NC 11

NC 11

NC 11

ORANGE 3

ORANGE 3

ORANGE 3

BLACK 12

BLACK 12

BLACK 12

WHITE 9

WHITE 9

WHITE 9

NC 11

NC 11

NC 11

NC 11

NC 11

NC 11

NC 11

NC 11

NC 11

NC 11

NC 11

NC 11

NC 11

NC 11

NC 11

NC 11

NC 11

NC 11

NC 11

NC 11

NC 11

NC 11

NC 11

NC 11

NC 11

NC 11

NC 11

NC 11

NC 11

NC 11

NC 11

NC 11

NC 11

NC 11

NC 11

NC 11

NC 11

NC 11

NC 11

NC 11

NC 11

NC 11

NC 11

NC 11

NC 11

NC 11

NC 11

NC 11

NC 11

NC 11

NC 11

RED 47Ω

AT

D1

D2

D3

D4

SW1

SW2

SW3

SW4

SW5

SW6

SW7

SW8

SW9

SW10

SW11

SW12

SW13

SW14

SW15

SW16

SW17

SW18

SW19

SW20

SW21

SW22

SW23

ON/OFF

FAST

OFF

SLOW

FIXED

MIX

ROTARY

ORGAN

MIX

ECHO

SIGNAL

SIGNAL RETURN

SIGNAL GROUND

SIGNAL INPUT

TO ORGAIN

TO LESLIE SPEAKER

CONTROL SUPPLY COMMON

CONTROL CIRCUIT COMMON

FAST MOTOR CONTROL

SLOW MOTOR CONTROL

CIRCUIT GROUND

CHANNEL ONE (ROTARY)

CHANNEL TWO (FIXED)

NC 11

NC 11

NC 11

NC 11

NC 11

NC 11



SW2 & SW3
SW4

P3 S3

S1B S2

P2

(ALL SHOWN FROM WIRE END)