



CONSOLE CONNECTOR KIT 8002

INSTALLATION INSTRUCTIONS

FOR USE WITH: HAMMOND Organ Models C-2, C-3
LESLIE Speaker Models 122, 122RV, 142, 242

KIT CONTENT

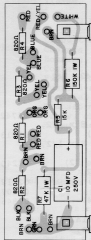
Console Connector Assembly	047357	Hardware Package	047423
Console Connector Extension	047373	Screw, sheet metal, 8 x 1/2,	
Cable Assembly,		Phillips head (2)	029132
6-conductor, 30-foot	017277	Screw, sheet metal, 8 x 1/2,	
Oiler	053025	Phillips head,	
		antique bronze (2)	042408
Tremolo Control		Screw, wood, 6 x 1/2,	
brown	015594	Phillips head (2)	029124
ebony	015602	Wire Nut (2)	028076
ivory	015610	Staple, insulated (4)	028464

CAUTION: Due to the presence of electrical potential and the danger of moving mechanical parts, installation procedures or adjustments requiring work inside the LESLIE speaker cabinet or the organ console should be performed only by a service man authorized by the dealer or factory to perform such work.

INSTALLATION

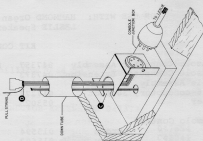
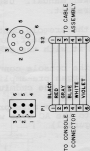
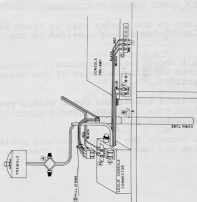
CAUTION: DISCONNECT ORGAN POWER BEFORE PROCEEDING!

1. Mount the tremolo control switch on the wooden rail in front of the lower manual. Use the black oxide screws provided in the hardware kit.
2. Route the tremolo control cable under the lower manual, through the keyboard shelf, and into the amplifier section of the organ. Fasten it with the staples provided.
3. Mount the console connector chassis inside the organ within reach of the organ pre-amplifier, down tube, and the tremolo control cable. Use the cadmium-plated screws provided.
4. Using the wire nuts provided, connect the tremolo control cable wires to the AC type wires from the console connector chassis. (A, figure 1)

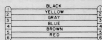


Circuit Board Assembly 047506

Reference Designation	Description	Part No.
C1	Capacitor, 10 mfd, 250 volts	018093
R1,R2,R3,R4	Resistor, 820 ohm, 1/2 watt, 10%	028373
R5	Resistor, 150 ohm, 1/2 watt, 10%	048157
R6	Resistor, 150K, 1 watt, 10%	024117
R7	Resistor, 47K, 1 watt, 10%	018547
	Circuit Board, etched	044180



Schematic, 047365 Console Connector Extension
(Plug and Socket Shown from Wire End)



Schematic, 017277 Cable Assembly
(Plug and Socket Shown from Wire End)

PARTS LIST: 017277 CABLE ASSEMBLY

Plug, 6-pin	061721
Socket, 6-pin	029546
Cap Body, right	130000
Cap Body, left	130010
Screw, sheet metal, 4 x 1/2, hex washer head	136360

5. Locate the down tube atop the organ junction box and remove its screws and locking clamp (B). Slide the tube up approximately 3 inches to make room for the console connector extension.
6. Guide the existing organ console wires through the slot in the extension chassis (C).
7. Drop a pull string through the down tube and tie the string to the extension cable plug (D).
8. Pull the extension cable up the tube and onto the tone generator support shelf. Insert the extension plug into its socket on the console connector chassis (E).
9. Fit the down tube into its hole in the extension chassis. Using the bronzed wood screws provided, mount the extension chassis on the bottom shelf (C).
10. Connect the BLUE and GREY console connector wires to the 117 VAC terminals behind the protective cover on the organ pre-amplifier (F).
11. Connect the BROWN console connector wire to the GND terminals on the organ pre-amplifier (G).
12. Remove the RED and BLACK main speaker wires from the two terminals marked "G" on the pre-amplifier (I). Connect these wires to the two screw terminals (H) on the console connector chassis.
13. Connect the RED and BLACK console connector wires to the pre-amplifier "G" terminals.

NOTE: Terminals in steps 10-13 may be solder-type terminals. If so, remove the spade lugs from the console connector wires and solder the wires in place.

14. Plug the LESLIE speaker cable into its socket on the console connector extension chassis.
15. Adjust the speaker volume according to the speaker back card or the LESLIE service manual.

NOTE: The ORANGE, BROWN, YELLOW, and BLUE wires from the console connector are not used in this installation. Insulate the wires and fasten them aside so that they do not contact any other wires or parts.

Ordering Parts

Standard hardware, connectors, and electronic components should be purchased locally. Non-standard items may be obtained through a LESLIE speaker dealer. Orders should include part numbers as listed.

PARTS LIST: CONSOLE CONNECTOR ASSEMBLY 047357

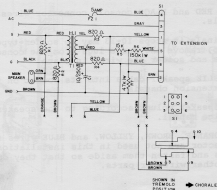
Circuit Board Assembly	047506
Chassis	061960
Housing, socket, 6-circuit	042119
Contact, insert, female (6)	023556
Fuse Holder	055178
Fuse, 5-amp	029280
Terminal Strip	034108
Transformer, isolation	048025
Screw, sheet metal, 8 x 1/4, Phillips head (2)	025635
Screw, machine, 6-32 x 3/8 (2)	027979

PARTS LIST: CONSOLE CONNECTOR EXTENSION 047373

Cable Assembly, extension	047654
Chassis	042341
Ring, retainer	031948

PARTS LIST: TREMOLO CONTROL

Switch Case		Switch Knob	
brown	103750	brown	048066
ebony	103760	ebony	048074
ivory	103770		
Case Cover		Switch and Cable Assembly	028704
brown	048702	Switch Retainer (2)	048744
ebony	048710	Screw, thread-cutting,	
ivory	048728	6-32 x 3/8 (2)	029140
Cork, adhesive	029157	Label, CHORALE/TREMOLO	103640



Schematic, 047357 Console Connector and Controls
(Socket Shown from Wire End)