

CONSOLE CONNECTOR KIT

INSTALLATION INSTRUCTIONS

FOR USE WITH: HAMMOND Models B2, B3

LESLIE Speakers: 122, 122V, 122RV, 142, 222, 222RV

MULTIPLE SPEAKER INSTALLATION: For complete information, see the service manual of the specific model Leslie Speaker to be added.

CONTENTS OF KIT:

1 Console Connector	047357	1 Tremolo Control
1 Extension	047365	
1 6 Conductor Cable	017277	015594 brown
1 Instructions	047472	015602 ebony
4 Insulated Staples	028464	015610 ivory
1 Oilier	053025	
2 Screws, 8 x 1/2, Bronzed	042408	
2 Screws, 8 x 1/2	029132	
2 Screws, 6 x 1/2	029124	
2 Wire Nuts	028076	

TO INSTALL THE KIT:

1. Mount the Tremolo control switch to the wooden rail in front of the lower manual. Use the black oxide screws provided in hardware kit.
2. Route the control cord under the lower manual, through the keyboard shelf, and into the amplifier section of the HAMMOND. Fasten with staples provided.
3. Mount the console connector chassis inside the organ within reach of the down tube, (see "B" on Fig. 1) HAMMOND pre-amplifier, and Tremolo switch control cable. Use the cadmium plated screws provided.
4. Connect the Tremolo control cord to the AC type wires from the console connector. Use the wire nuts provided. (See "A" on Fig. 1)
5. Locate the down tube which is near the HAMMOND junction box. Remove its screw and locking clamp. Then slide the tube upward about 3 inches to make room for the extension chassis. (See "B" on Fig. 1)
6. Remove the two side screws from the extension chassis. Now loosen the two top screws and slide chassis' end plate out of the chassis body (See Fig. 1).
7. Guide existing HAMMOND console wires through the slot in the extension chassis. (See "C" on Fig. 1)
8. Drop a pull string through the down tube and tie it to the extension cable plug. (See "D" on Fig. 1)
9. Pull extension cable up the tube and onto the Tone Generator Support Shelf. Insert the extension plug into its socket on the console connector. (See "E" on Fig. 1)
10. Fit down tube into its hole on the extension chassis and reassemble the chassis. Using the BRONZED wood screws provided, mount extension chassis to the bottom shelf. (See "C" on Fig. 1)
11. Connect BLUE and GREY console connector wires to the 117 VAC terminals behind the protective cover on the HAMMOND pre-amplifier. (See "F" on Fig. 1)

ELECTRO MUSIC

CBS Musical Instruments

A Division of Columbia Broadcasting System, Inc.

12. Connect BROWN console connector wire to the "GND" terminal on the HAMMOND pre-amplifier. (See "G" on Fig. 1)
13. Remove RED and BLACK main speaker wires from HAMMOND pre-amp's two "G" terminals. Connect them to the two screw terminals on the console connector chassis. (See "H" on Fig. 1)
14. Connect RED and BLACK console connector wires to matching "G" terminals formerly occupied. (See "I" on Fig. 1)

NOTE: Terminals in steps 11-14 may be solder-type terminals. If so, remove spade lugs from the console connector wires and solder these wires to proper terminals.

15. Plug the LESLIE Speaker cable into its socket on the console connector extension chassis. (See Fig. 1)
16. Adjust speaker volume according to the speaker back card or the LESLIE service manual. Installation is now complete.

NOTE: Disregard the shielded cable containing an ORANGE, BLUE, BROWN, and YELLOW wire which protrudes from the console connector. It is not used in this application.

EXTENSION INSTALLATION

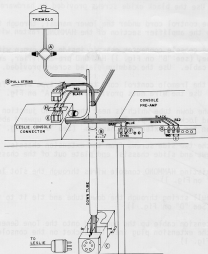


Fig. 1